



Live Work Play
NSW: THE STATE OF INCLUSION

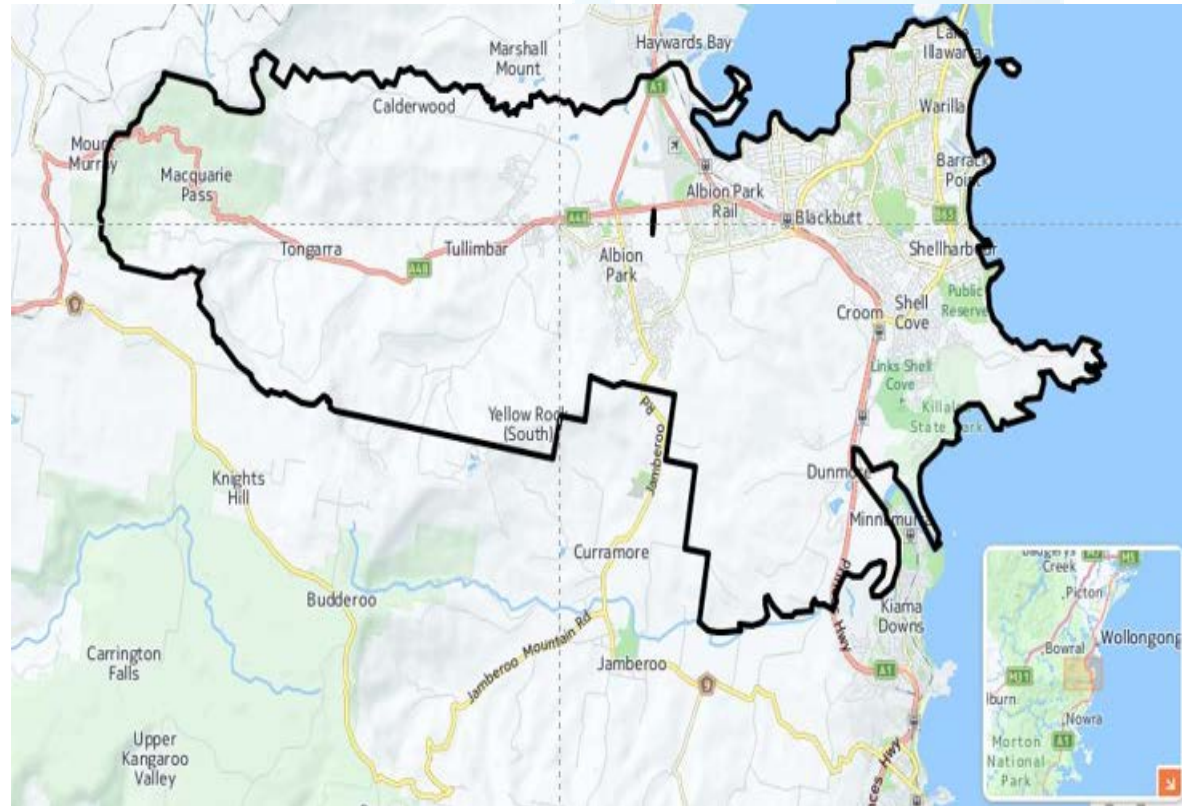
Narelle Williams

Community Development Officer –
Access and Participation

Agenda

- About Shellharbour City
- Commitment to access improvements
- Preparing the Disability Inclusion Action Plan
- How the plan informed disability inclusion projects that will be driven by Council

Shellharbour City



Source: forecast.id

Shellharbour City

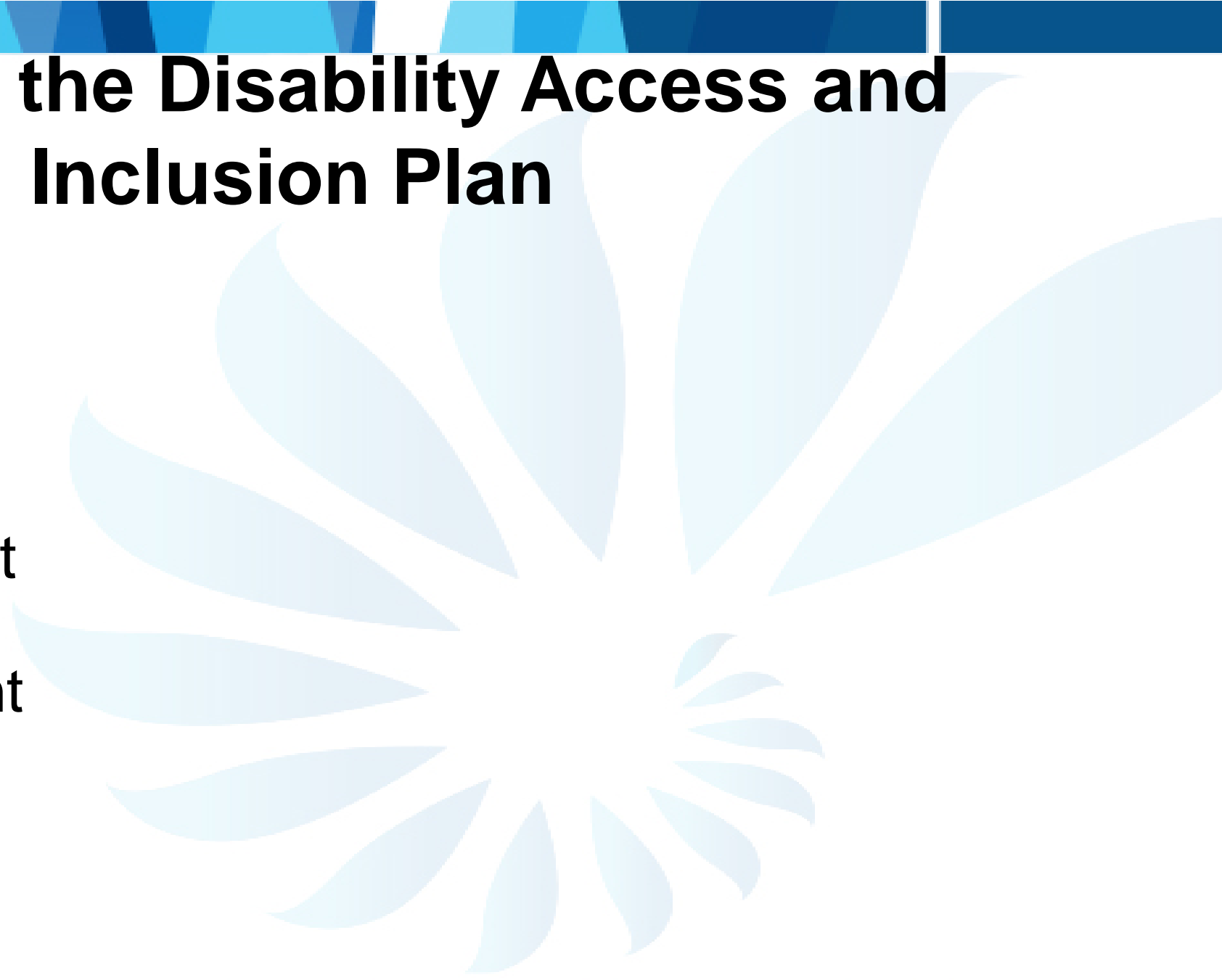
- Population of 63 605
- 5.9% of the population requiring assistance due to profound or severe disability
- Source Census 2011

Commitment to access improvements

- Disability Advisory Committee since 1987
- Properties externally audited 2001
- Funding from 2001/02
- First Disability Action Plan in 2003
- Additional funding in 2008/09

Preparing the Disability Access and Inclusion Plan

- Pre –planning
- Engagement
- Plan development
- Plan endorsement
- Launch



How the plan informed disability inclusion projects

- From access to inclusion
- Reaffirmed community expectation
- Broader focus
- Expanded priorities
- Whole of Council approach
- Identified gaps
- Top 10 ideas for inclusion
- Encourages collaboration

How the plan informed disability inclusion projects

- Creating liveable communities
 - improve access to beaches and waterways



Existing beach access



New path



New sign



Shellharbour North Beach Beach Wheelchair

The wheelchair is available as below:

September School Holidays to December School Holidays	Weekdays 9.45am - 4.30pm
--	-----------------------------

December/Jan School Holidays	7 days a week 9.15am - 4.30pm
------------------------------	----------------------------------

End of January School Holidays to ANZAC day	7 days a week 9.45am - 4.30pm
--	----------------------------------

ANZAC day to September School Holidays	Wheelchair available by booking only, please contact customer service
--	--

The chair is secured by a combination lock and the code is available at Customer Service or at the Patrol on the beach. Bookings are not required except during the winter months.

For more information contact 4221 6111
or visit www.shellharbour.nsw.gov.au



Attitudes and behaviours

- Walk for inclusion



Lake foreshores



Systems and processes

- Review of the Development Control Plan



Employment

- Review of recruitment procedures



Thank you

- For more information contact me on

Phone: (02) 4221 6085 or

Email: Narelle.Williams@Shellharbour.nsw.gov.au